

WINDOWS DRIVERS INSTALL

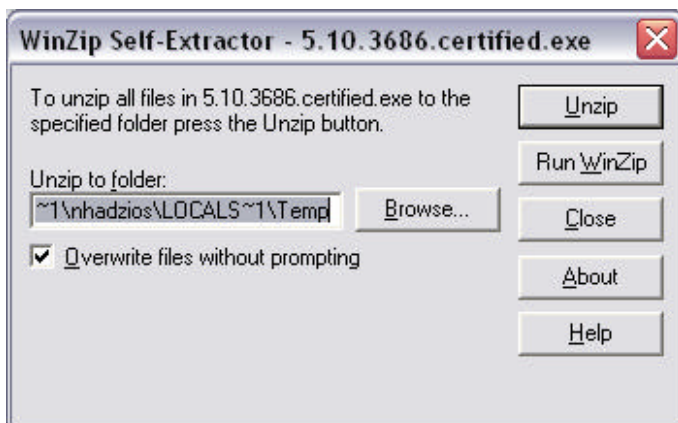
Warning:

MDG Computers Canada recommends that you have your system serviced by a professional technician either at one of our stores or by sending your system back to the head office. If you choose to continue the process, be advised that MDG Computers Canada cannot be liable for any loss or damage that may occur.

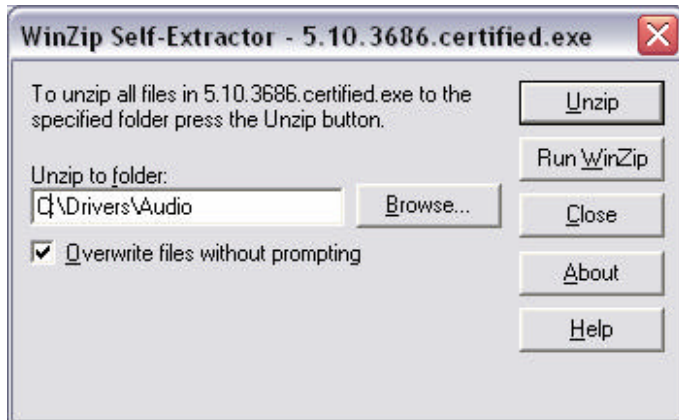
NOTE: PLEASE INSTALL "INF" FILE FIRST

Please note that some of these are general explanation. Depending on the driver certain drivers come in the WINZIP format and some are .EXE format. IF the drivers are in the WINZIP format then you will have to unzip them first. To unzip the drivers to the folder do as following:

1. Double click on the WinZip file. Please note you HAVE TO have WinZip installed on your PC prior to this.
2. If you do not have WinZip installed please go to <http://www.winzip.com> and download it from there and install it.
3. Once you have that installed then Double Click on the file in your folder (i.e. C:\Drivers\Audio\XYZ.exe)
4. A little screen should pop up asking you what you would like to do.



5. Please delete the "UNZIP TO FOLDER" box and click on "BROWSE"
6. Then select the folder that you would like to unzip the file too, for example if you are unzipping the Audio file then please unzip it to C:\Drivers\Audio, OR the folder where you downloaded your Audio file from Intel.com website.



7. Please click **“UNZIP”**
8. Once it is unzipped, close the WinZip and go to that folder where you just unzipped the files and double click on the **“SETUP INSTALL SHIELD”** file.
9. Follow the instructions from that point on.

DRIVER INSTALL AS .EXE:

If the file is not a WinZip file please do as following:

1. Double click on the file that you would like to install, for example from your **“LAN (Ethernet card)”** folder you should have a file that ends in .EXE (such as **5.10.3689._XP_WIN2K.exe**)
2. Just follow the prompts in order to update or install a new copy of files on your system.
3. There is no need to unzip some of the files. They are just a straight executable install file.
4. Once you install a file a prompt may come up asking you to restart. It is highly recommended to reboot at that point.

TO INSTALL DRIVERS FROM A CD-ROM:

1. Double Click on **“MY COMPUTER”**
2. Right click on **“CD-ROM”** and select **“EXPLORE”**
3. *Follow the same procedure to install drivers from the CD-ROM drive as If they come in a WinZip format then please follow the WinZip installation procedure, and if they come in .EXE format follow the .EXE procedure to install the drivers.*